



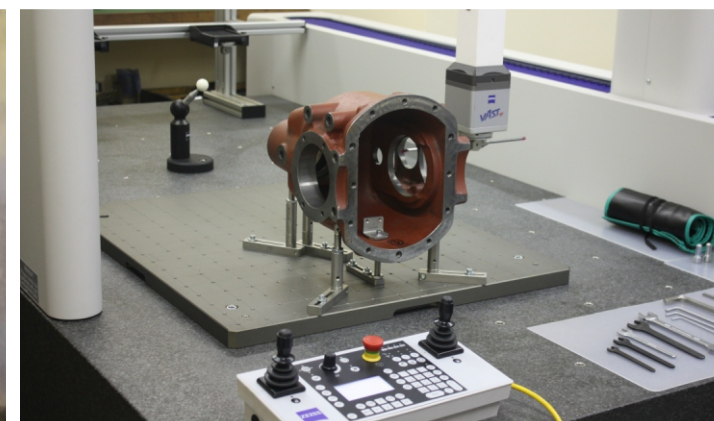
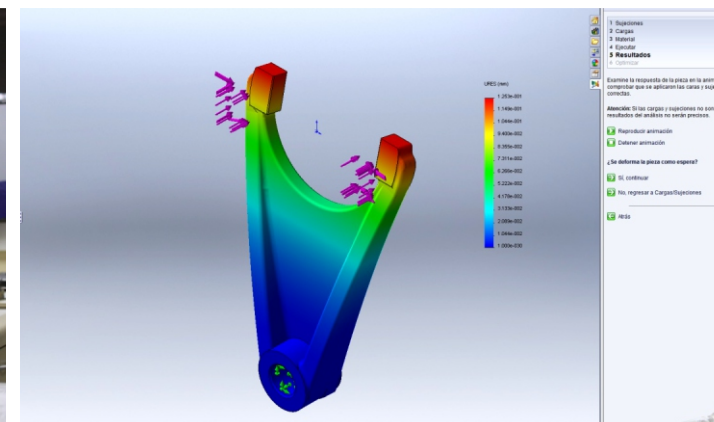
**≡ J ≡<sup>®</sup>**  
**JP INDUSTRIAS MECÁNICAS, S.L.**



---

**CORPORATE PRESENTATION**





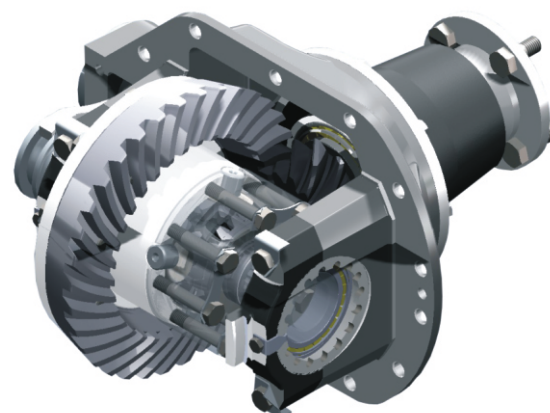
## HISTORY

Founded in 1951 by José Jaime Pérez Fernández, born in Tapia de Casariego (Asturias - Spain), the company started out as a repair garage for trucks and mining machinery. As from the 1970's the company evolved to the design and manufacture of mechanical components for the car industry, public works, forest machinery and agricultural machinery.

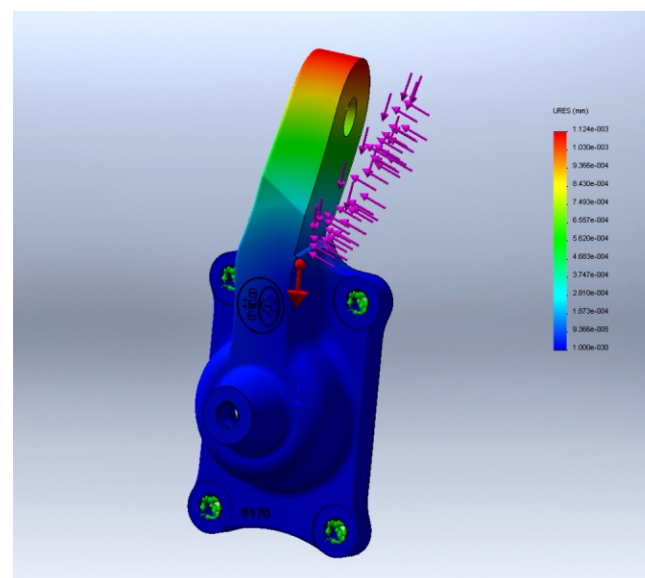
After the death of its founder, in 2009 the firm became a limited company.

It is currently endowed with modern premises fitted with state-of-the-art technologies. These premises take up around 12,000 m<sup>2</sup> with a covered surface area of 3,600 m<sup>2</sup> distributed as follows:

- Industrial unit dedicated to manufacturing 2,800 m<sup>2</sup>
- Administrative offices 260 m<sup>2</sup>
- Area for warehouse and other uses 260 m<sup>2</sup>
- Annex to compressor room and other uses 280 m<sup>2</sup>



## ALL-IN PROJECTS



Combining the decades of accumulated experience in component manufacturing and machining and channelling this through state-of-the-art technologies, computing equipment and specific design software both in 2D and in 3D, we develop all-in projects: gathering of initial data, design, programming, manufacture of own tools, manufacture of parts and assembly of units.

The blend of close collaboration with the client and the experience accumulated by our staff in the fields of design and manufacture enables us to provide the client with those proposals which best adapt to its requirements without forgetting manufacturing savings and the quality demanded, enabling us to optimise costs at each of the project stages, from the design stage to the manufacturing stage.





HELLER MCH 450-C



HELLER MCH 280-C



HELLER MCH 350



IBARMIA ZVL-2000



IBARMIA ZV40-L2200



PAINT BOOTH



LEALDE V-100 N



LEALDE TCN-10-S



LEALDE TCN-11



LEALDE TCN-12



CONVENTIONAL LATHES



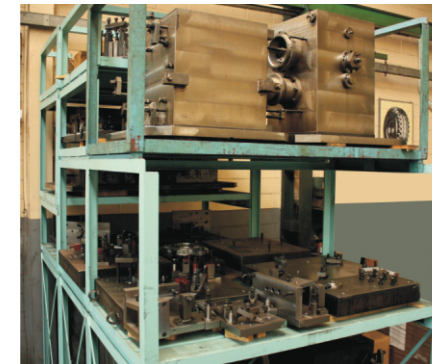
IBARMIA 70-BR



IRSASA RSE-32



WELDING



TOOLS



DANOBAT 1600-RP

## MEANS OF PRODUCTION

### • CNC horizontal machining centres (5 axes)

- 1 CNC Heller MCH 450-C machining centre (43 kw)  
2 PALLETS 800x1000 Máx. 2000 kg Tool places 50 ISO 50 Working area.: X=1600 Y=1200 Z=1700
- 1 CNC Heller MCH 280-C machining centre (43 kw)  
2 PALLETS 630x630 Máx. 800 kg Tool places 405 HSK 100A Working area.: X=1000 Y=1000 Z=1100
- 1 CNC Heller MCH 350 machining centre (43 kw)  
2 PALLETS 800x800 Máx. 1250 kg Tool places 50 HSK 100A Working area.: X=1250 Y=1000 Z=1000

### • CNC vertical machining centres (3 axes)

- 1 Ibarmia ZVL-2000 CNC machining centre (35 kw)  
TABLE 2600x650 Máx. 2500 kg Tool places 30 SK 40 Working area.: X=2000 Y=600 Z=800
- 1 Ibarmia ZV40-L2200 CNC machining centre (35 kw)  
TABLE 2600x650 Máx. 2500 kg Tool places 40 SK 40 Working area.: X=2200 Y=600 Z=800

### • CNC horizontal lathes

- 1 lealde V-100 N CNC horizontal lathe (40 kw)  
Ø over bed = 510 Turning Ø = 340 Bar capacity = 56 L = 1250 Tool places 8
- 1 lealde TCN 10-S CNC horizontal lathe (35 kw)  
Ø over bed = 520 Turning Ø = 350 Bar capacity = 75 L = 950 Tool places 8
- 1 lealde TCN 11 CNC horizontal lathe (35 kw)  
Ø over bed = 520 Turning Ø = 350 Bar capacity = 91 L = 975 Tool places 8
- 1 lealde TCN 12 CNC horizontal lathe (45 kw)  
Ø over bed = 700 Turning Ø = 430 Bar capacity = 115 L = 1500 Tool places 8

### • Conventional lathes

- 1 Tor T-4 copying lathe (7,36 kw)  
Ø over bed = 375 Ø over cross slide = 190 L = 630
- 2 Tor D500 parallel lathes (7,36 kw)  
Ø over bed = 500 Ø over cross slide = 300 L = 1500
- 1 Tor ciclotor automatic lathe (9,02 kw)  
Ø over bed = 426 Ø over cross slide = 230 L = 838
- 1 Geminis GE-650 parallel lathe (11,04 kw)  
Ø over bed = 650 Ø over cross slide = 390 L = 1500
- 1 Geminis GE-870 parallel lathe (11,04 kw)  
Ø over bed = 870 Ø over cross slide = 580 L = 3000

### • Other resources

- 1 Ibarmia 70-BR multiple drill (5,89 kw)  
TABLE 850x720 Stroke = 580
- 2 Irsasa RSE32 radial drills (3,03 kw)  
TABLE 1300x650 Stroke = 500
- 1 Danobat 1600-RP exterior rectifier (8,76 kw)  
Ø Max. = 350 L = 1600

- Saws: band, automatic, alternative
- Welding: semiautomatic MAG-MIG, electrode
- Miscellaneous: autogeneous, emery grinding, grinders, tools pre-adjustment, press, paint booth.
- Auxiliary machine: compressors, pulley blocks, travelling cranes, forklift trucks.

### • Auxiliary resources: gears and splined shafts

- Cylindrical: 0.1 to 16 module, max. diameter 1000 mm.
- Conical: 0.5 to 10, module, max. diameter 500.
- Interior: Max. module 8, max. diameter 400.
- Rectified cylindrical: 0.5 to 15 module, max. diameter 1000
- Rectified splined shafts:
  - Diameter of 16 to 120 mm.
  - Haft length 1200 mm
  - Rectified length 1000 mm.
  - Straight profile (DIN 5462, 5463, 5471, 5472)
  - Involute profile (DIN 5480 and 5482, ANSI B 92 1)
- Milled splined shafts:
  - Diameter 16-120 mm.
  - Shaft length 600 mm.
- Broached.



# ACTIVITY SECTORS

Experience in machining parts for:

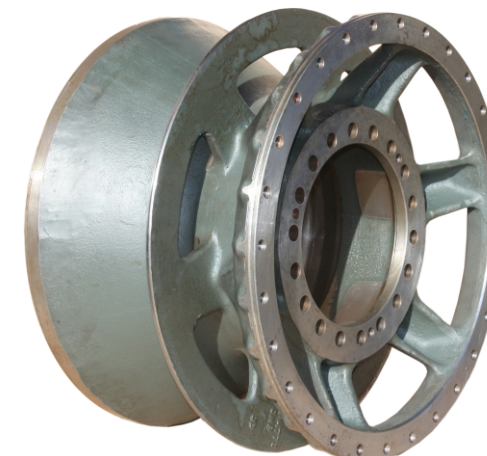
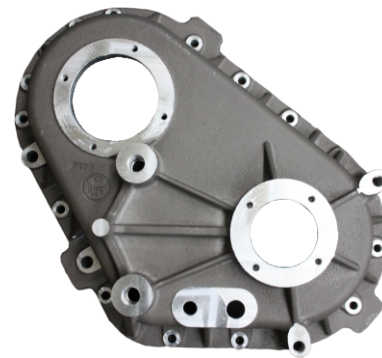
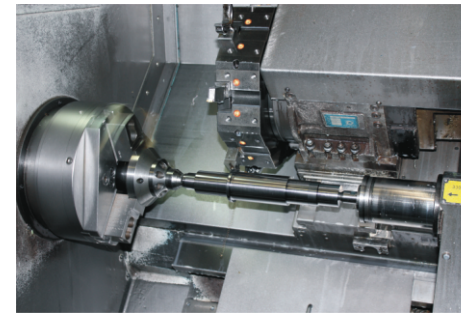
- Automotive sector
- Naval
- Railways
- Military

We have the means to supply a finished part in all kinds of materials:

- Steels (alloy, non-alloy, treated, etc.)
- Forging
- Nodular cast iron
- Cast steel
- Cast aluminium

Specialised in small and medium series.

Own materials or supplied by the client.





# SERVICES

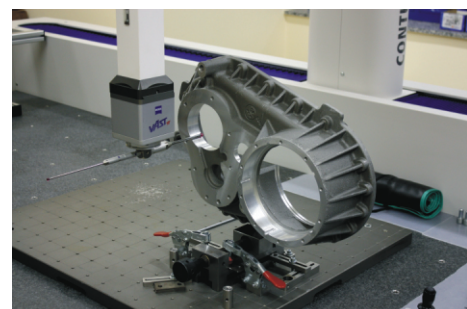
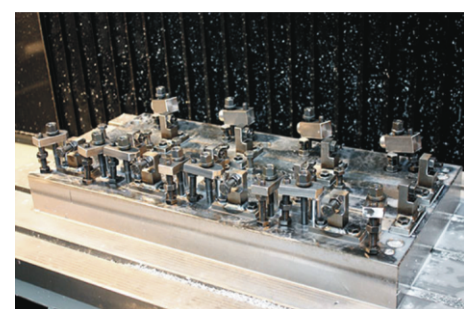
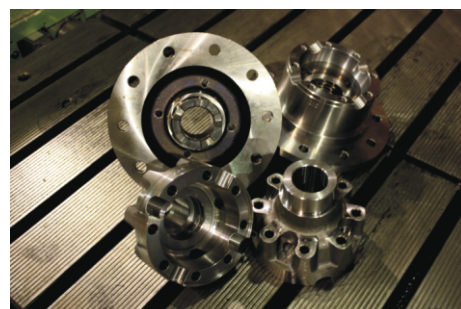
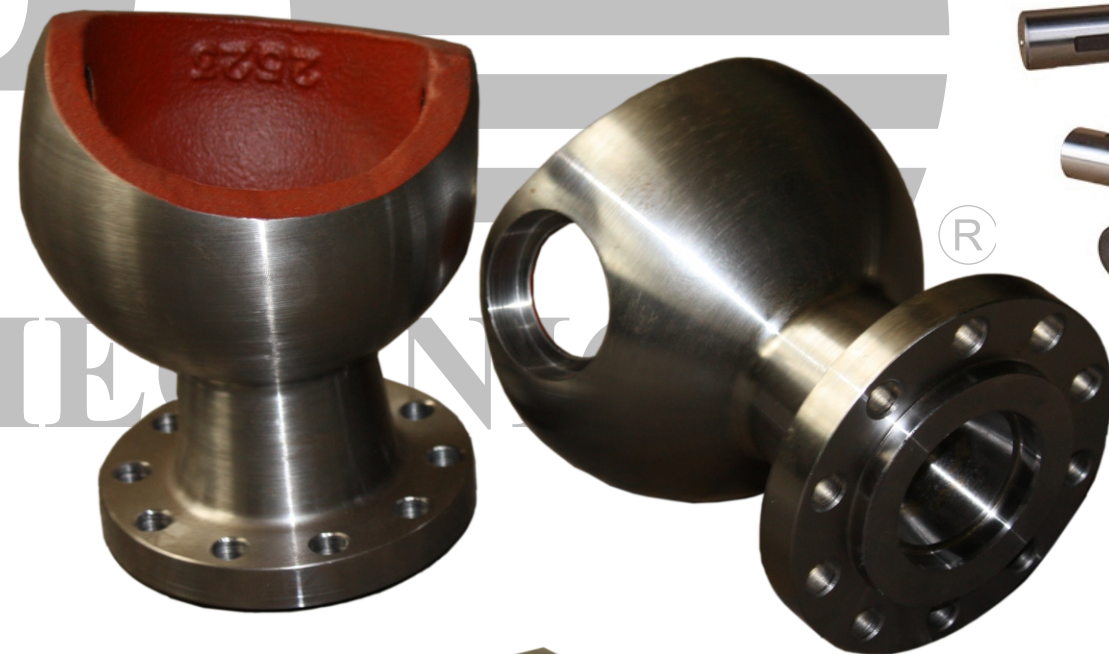
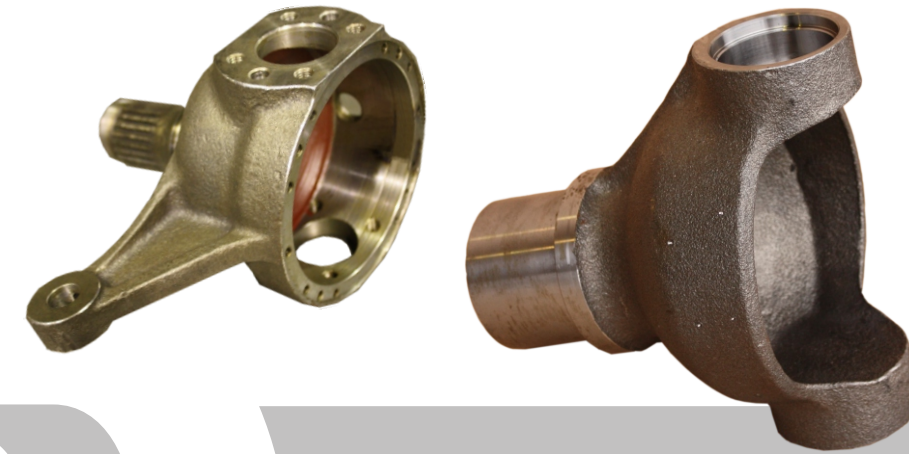
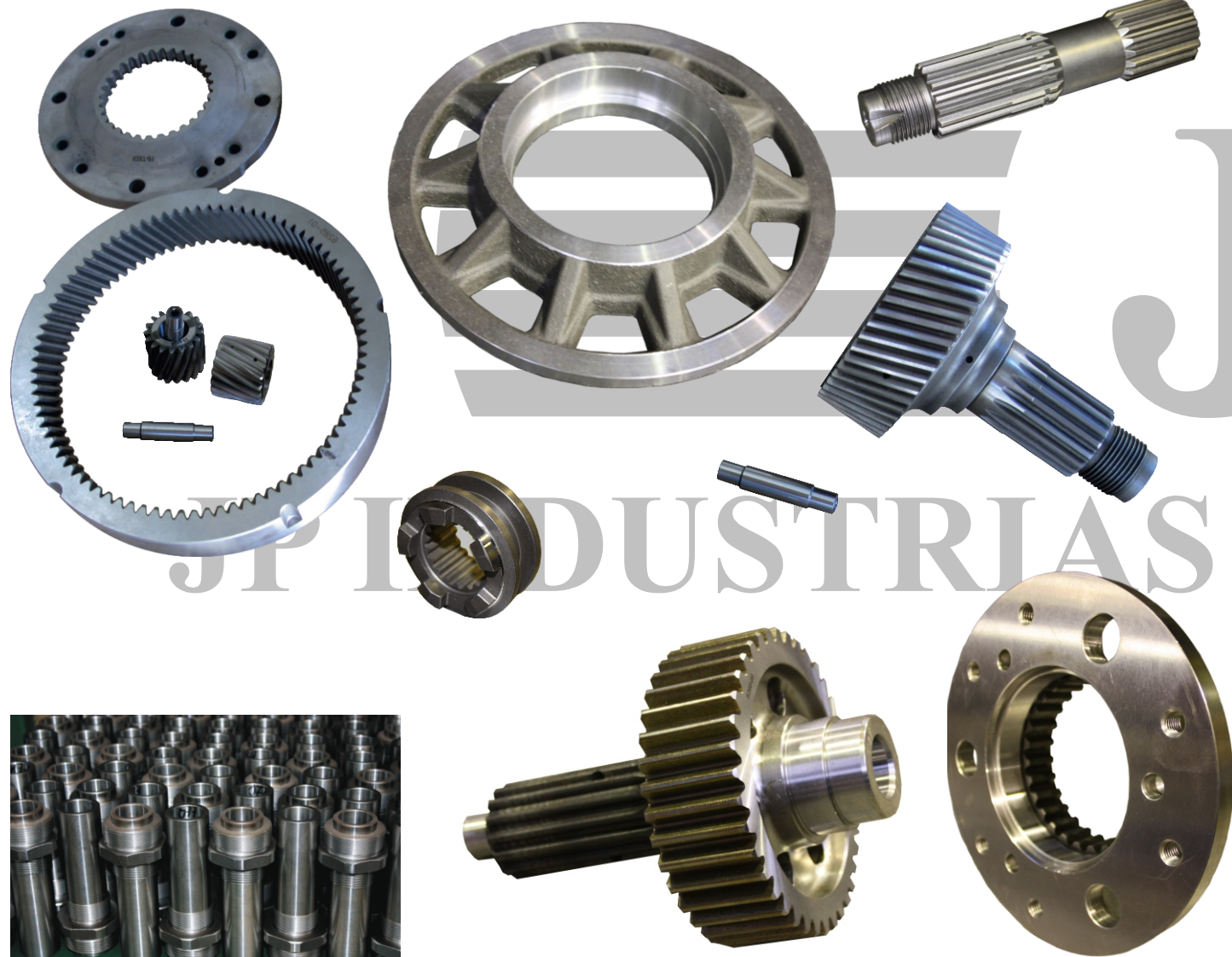
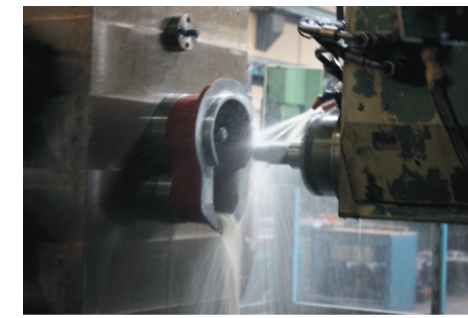
On request we carry out:

**\* Project development:**

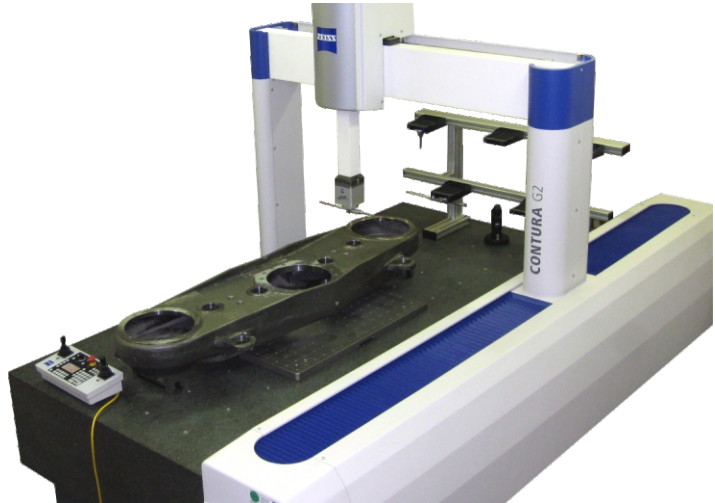
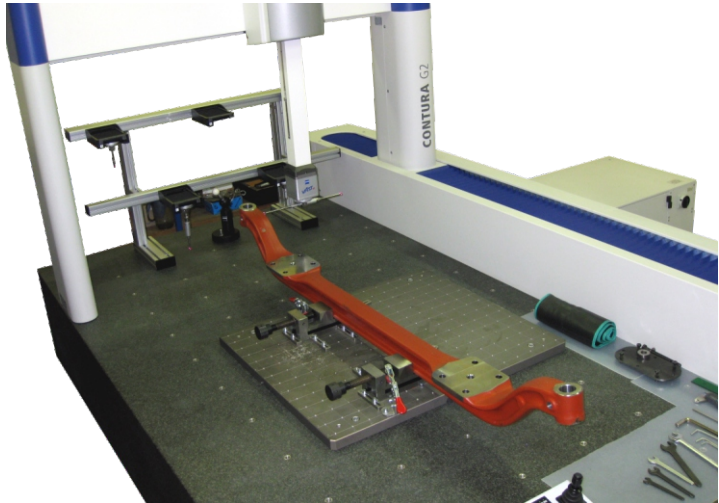
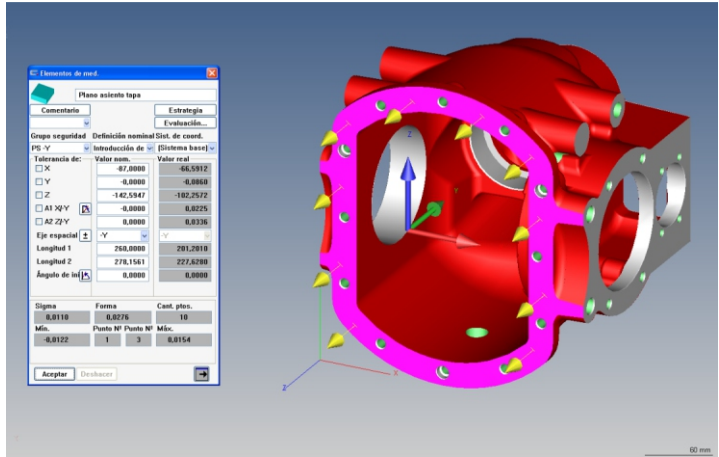
- Selection of materials
- Parts, tooling and model design
- Gear calculation and design
- Heat treatments

**\* Manufacture in accordance with own or clients specifications.**

**\* Ability to design and manufacture gears as well as tools and utensils with qualities from 5 to 9.**







# QUALITY AND ENVIROMENT

As the final link in the chain designed to meet the requirements of our clients, **JP INDUSTRIAS MECÁNICAS S.L.** has a modern quality department. Said department not only enables us to guarantee our clients the adaptation of the manufactured parts to the stipulated specifications, but it also helps us to optimise processes and designs at the design and development stages. To this end we have the following means of measurement and control:

- **Measurement by coordinates:**
  - 1 coordinate measuring machine  
**ZEISS CONTURA G2 10/21/6 AKTIV**  
with measurement ranges of: X=1000, Y=2100, Z=600.
- **Other equipment:**
  - Durometer, roughness meters, thickness meters, sizing blocks.
  - Micrometers for interiors and exteriors, alexometers, comparators, slide callipers.

All our equipment is calibrated in accordance with ENAC and used in accordance with **ISO 9001** procedures which form part of our quality management system, accrediting us with the most prestigious certification.

Likewise, our company is aware of the care and protection of the environment. For this reason, It undergoes rigorous controls to maintain the **ISO 14001** certificate.



CERTIFICACIÓN  
ISO 9001:2015 · ISO 14001:2015

Certificado por  
LLOYD'S REGISTER  
QUALITY

# PRODUCTS

The entire structure presented herein is prepared for the manufacture of mechanical components such as:

- Differential axles
- Transfer boxes
- Reducers
- Trailer hitches
- Capstans







Carretera de Besullo, Km. 1,4 (CN-1)  
Apartado de Correos n.º 20  
33800 Cangas del Narcea - Asturias  
ESPAÑA

Tel.: +34 985 81 08 68

Fax: +34 985 81 00 49

e-mail: info@jpim.es



### From the North (Oviedo - Airport)

#### Orange route.

You take the A-63 in the direction of "GRADO-LA ESPINA" and leave at exit 28. Then you take the AS-15 which runs along the banks of the River Narcea until reaching your destination.

### From the South (León)

#### Yellow route.

From León via the AP-66 in the direction of Asturias, you take the CL-623 at the Barrios de Luna dam and going through the districts of Babia and Laciana you reach Villablino. At Villablino you take the CL-631 to the port of Leitariegos and there you join the AS-213 as far as Cangas del Narcea.

